

### IN CASE OF FIRE

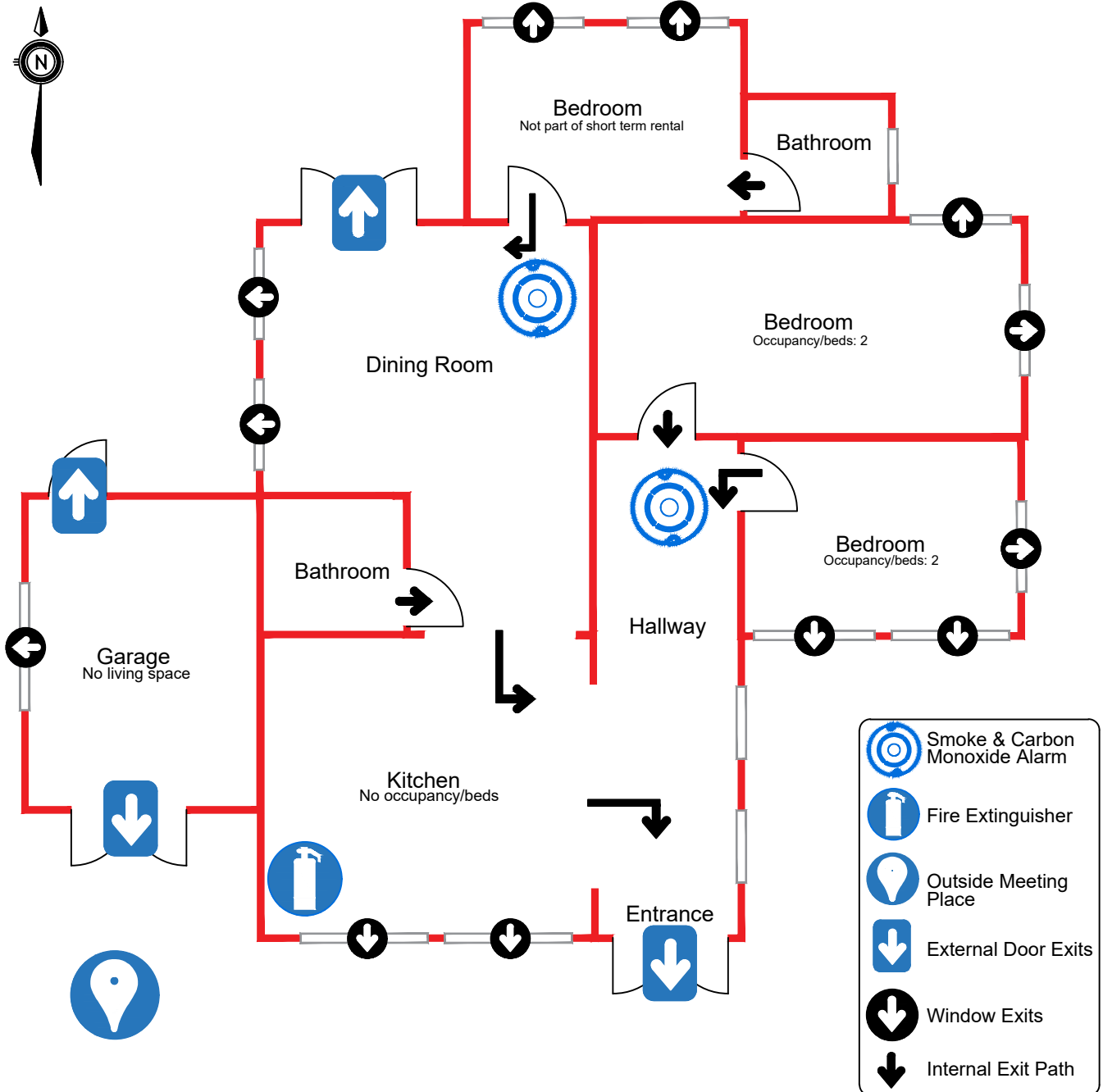
Upon discovery of fire leave area immediately and close door. Leave building via nearest exit. Call Fire Services by dialing 911 from outside the building.







### UPON HEARING SMOKE AND/OR CARBON-MONOXIDE ALARM:

Leave building via nearest exit. Close doors behind you. CAUTION: If you encounter smoke use an alternative exit. Call Fire Services by dialing 911 from outside the building

### OWNER CONTACT INFORMATION:

John Doe  
jdoe@example.ca  
555-555-5555



-  Smoke & Carbon Monoxide Alarm
-  Fire Extinguisher
-  Outside Meeting Place
-  External Door Exits
-  Window Exits
-  Internal Exit Path

Address: \_\_\_\_\_