

Where do my Property Taxes go?



Median Single Family
Detached Property

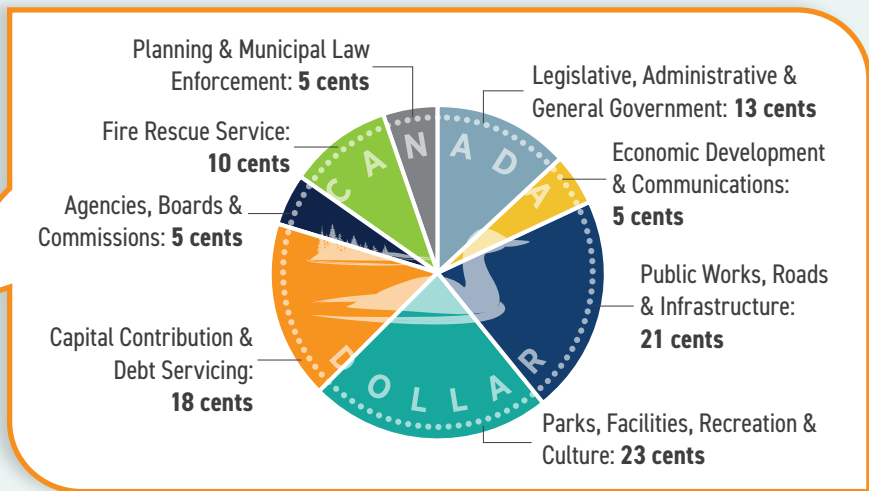
\$383,000 = **\$5,520**
ASSESSMENT VALUE IN TAXES ANNUALLY

Services funded by your Property Tax Bill

Lincoln's tax bill accounts for three agencies. The Town collects the property taxes for all three and then pays the Region and the School Board portions to them, which they use to deliver their services.

The Town of Lincoln's portion of the tax bill is used to deliver a number of services that make Lincoln a place to grow, prosper and belong. Each dollar of the Town of Lincoln property tax portion of your bill goes towards:

- Town of Lincoln **37%**
- Niagara Region **52%**
- Education (school boards) **11%**



NEW 12 Month PAP Plan

The Town offers several Pre-Authorized Payment (PAP) plans, including the new 12-month PAP. This plan allows taxpayers to make monthly payments more evenly throughout the year, interest-free. It's just one way we are making it more manageable for families or individuals on a fixed income, looking to plan more easily for regular expenses and manage their household budgets.

Payments are due on the first day of each month. See reverse for information on how to enroll in all of our PAPs.

Learn more about property tax relief and affordability measures in Niagara Region at Lincoln.ca/PropertyTaxRelief

LEARN MORE



For More Information

VISIT:

Lincoln.ca/PropertyTaxes

CONTACT:

tax@lincoln.ca or 905-563-2799 ext. 222





Frequently Asked Questions

How are my property taxes calculated?

Property taxes are calculated by multiplying the assessment value of your property by the applicable tax rate(s) for your class of property. The Municipal Property Assessment Corporation (MPAC) determines the assessment value and classifications of your property.

How is my property assessment value determined?

Questions about your Assessment? Visit [AboutMyProperty.ca](https://www.aboutmyproperty.ca) or contact MPAC Customer Contact Centre at 1-866-296-MPAC (6722), or 1-877-889-MPAC (6722).

In 2016, MPAC updated the assessed values of every property in Ontario. These values will continue to be used to calculate your property taxes for 2024, unless there have been changes to your property that resulted in an updated assessment from MPAC.

How much did my property taxes change?

The back of your property tax bill provides a calculation of the change in your property tax, as well as the change in the Region, Education, and Town portions of your tax bill. For 2024, the average residential taxes are estimated to increase 6.24% over 2023 (3.42% for the Region; 2.82% for the Town).

How do I find out how much I owe for taxes?

You can review your accounts and transactions by registering or logging in to our secure online service anytime, from anywhere.

All you need is your PIN number located on a previous tax bill. Visit [Lincoln.ca/OnlineAccounts](https://www.lincoln.ca/OnlineAccounts) and click on Register or Log In to Online Services.

Alternatively, please call us at 905-563-2799 ext. 222 and leave a message including the details of your inquiry and contact information. A Finance team member will be happy to look up your account and contact you shortly.

How can I enroll in a pre-authorized payment (PAP) plan?

Our convenient PAP plans allow us to directly withdraw amounts due from your bank account based on the plan you choose:

- 10 month*
- 12 month*
- On the installment due dates*

* No interest charges, provided you have no balance owing from previous years.

Visit [Lincoln.ca/OnlineAccounts](https://www.lincoln.ca/OnlineAccounts). Click the “Property Tax PAD Agreement (PDF)” and email the completed form and a VOID cheque or bank printout to finance@lincoln.ca. You can also pick up a form at Town Hall (Finance Department), then mail or drop off the completed form along with a VOID cheque or bank printout.

When are property tax payments due?

Regular instalment due dates are the last business day in February, April, July, and September. Interim Tax Bills are sent at the beginning of February, and Final Tax Bills are sent at the beginning of July. The due dates are printed on the tax bill. Pre-authorized payment plan withdrawal dates may differ (visit [Lincoln.ca/PropertyTaxes](https://www.lincoln.ca/PropertyTaxes) for details).

What interest rate is charged on overdue taxes?

Payment must be received on or before the due date to avoid additional penalty or interest charges. If taxes are unpaid, penalty/interest is charged the first day of each month thereafter on all balances past due, at a rate of 1.25% per month (15% per annum).

What are my property taxes paying for?

Your property taxes are distributed between Niagara Region, the School Boards, and the Town of Lincoln. See the front of this brochure for the breakdown of the Town portion of your property tax. Niagara Region also offers a convenient calculator and detailed educational video; visit [Lincoln.ca/TaxCalculator](https://www.lincoln.ca/TaxCalculator)

Enter the assessment from your tax bill; the calculator will estimate the amount of property tax you will pay and the distribution of your Regional property taxes.

Importance of investing in our infrastructure

In 2024, Lincoln Council approved an increase in the portion of the tax bill dedicated towards capital infrastructure. This demonstrates Lincoln's commitment to investing in our community, ensuring the sustainability of our infrastructure for future generations.

Learn more at [Lincoln.ca/AMP](https://www.lincoln.ca/AMP)



LEARN MORE



“Have Your Say”

Help shape the 2025 Budget!

The Town provides over 90 programs & services that impact your life every day. Visit [SpeakUpLincoln.ca/2025Budget](https://www.speakuplincoln.ca/2025Budget) to complete our survey to help us prioritize the 2025 Budget.

